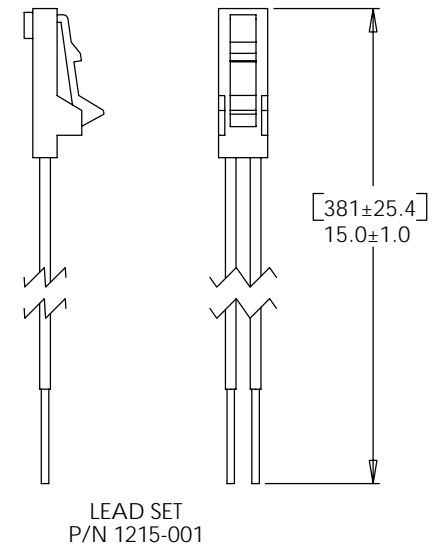
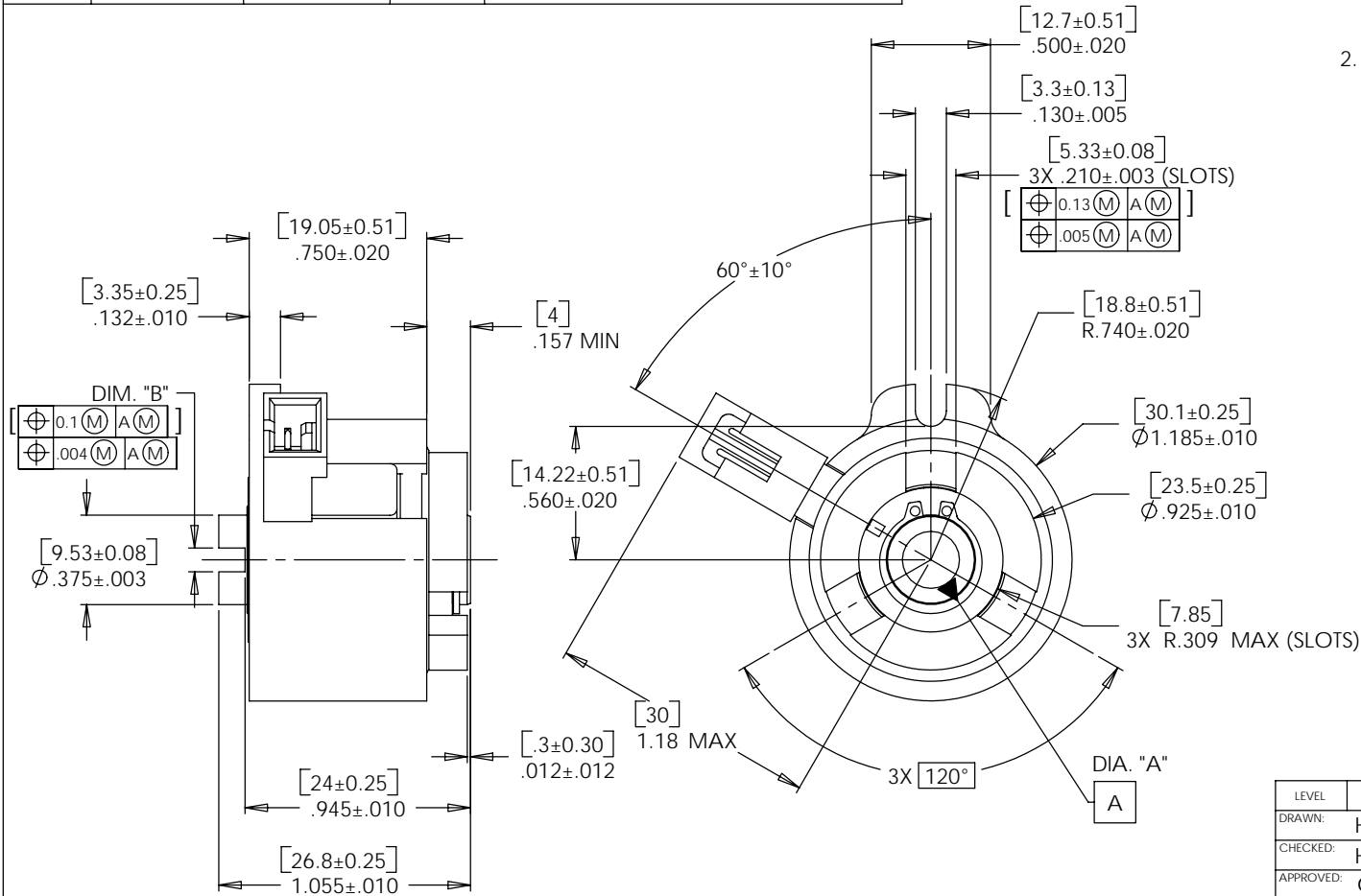


REELL RADIAL ELECTRIC CLUTCH

SHAFT NOM.	DIA. "A"	DIM. "B"	CROSS PIN SIZE	ONE MILLION CYCLE TORQUE RATING: [2.8 Nm] 25 Lb-in TOTAL LOAD.
1/4 6mm	.2505/.2530 [6.01/6.08]	.095/.098 [2.53/2.62]	3/32 [2.5]	6mm BORE SHOWN CROSS PIN SHAFT THREE DOG DRIVE HUB MOLDED COIL CONNECTOR

NOTES:

- CONNECTOR PINS ARE [0.64 x 0.64] .025 x .025 SQUARE. THE FOLLOWING MATING CONNECTORS CAN BE USED.  
 TERMINAL: POLARIZED LATCHING CONNECTOR, INSULATION DISPLACEMENT CONTACTS  
 AMP NO. 5-103956-1  
 ALTERNATE TERMINAL:  
 MOLEX NO. 14-60-0022
- RESISTANCE: 12 VOLTS 60 OHMS ± 10% AT [20°C] 68°F.  
 24 VOLTS 227 OHMS ± 10% AT [20°C] 68°F.



SPECIFICATIONS SUBJECT TO CHANGE

CONSISTENT WITH ASME Y14.5M-1994  
 THIS PRINT IS THE CONFIDENTIAL PROPERTY OF REELL PRECISION MFG.  
 THIRD ANGLE PROJECTION

LEVEL	DESCRIPTION	DRAWN	DATE	APPROVED
DRAWN: HMA	DATE: 11-10-86	PART NO: 70-XXX		
CHECKED: HMA	DATE: 9-10-87	TITLE: HIGH PERFORMANCE CLUTCH ASSEMBLY		
APPROVED: GDL	DATE: 9-11-87	DESCRIPTION: EC25		
REVISED: 2-7-06	DIMS: [mm]IN	REV: N		
REELL PRECISION MANUFACTURING 1259 WILLOW LAKE BOULEVARD SAINT PAUL, MINNESOTA 55110-5103, USA		SCALE: 2:1	DO NOT SCALE DRAWING	SHEET 1 OF 1