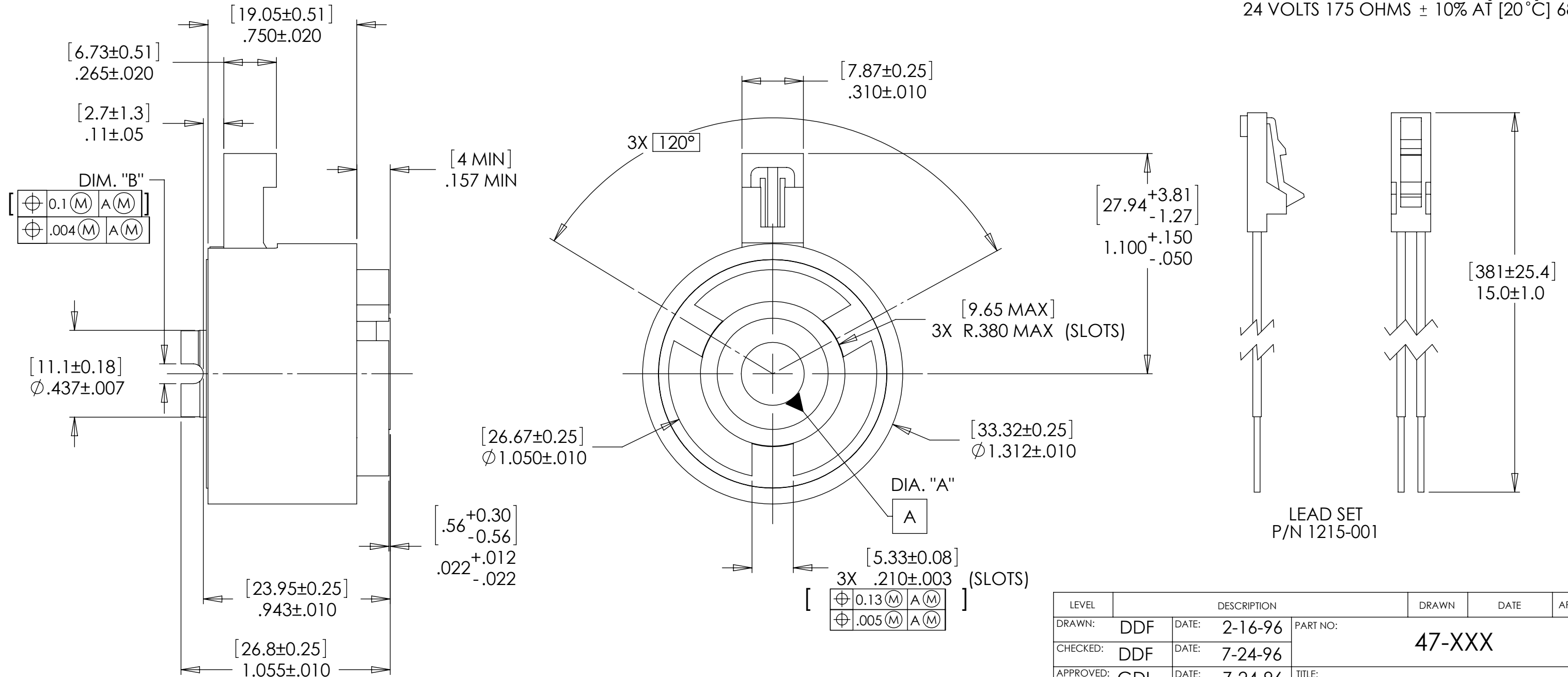


REELL RADIAL ELECTRIC CLUTCH

SHAFT NOM.	DIA. "A"	DIM. "B"	CROSS PIN SIZE	ONE MILLION CYCLE TORQUE RATING: [3.45 Nm] 30 Lb-in TOTAL LOAD.
1/4	.2505/.2530	.099/.108	3/32	8mm BORE SHOWN CROSS PIN SHAFT THREE DOG DRIVE HUB MOLDED COIL CONNECTOR
5/16	.3130/.3185	.099/.108	3/32	
6mm	[6.01/6.09]	[2.53/2.75]	[2.5]	
8mm	[8.01/8.09]	[2.53/2.75]	[2.5]	

NOTES:

- CONNECTOR PINS ARE [0.64 x 0.64] .025 x .025 SQUARE. THE FOLLOWING MATING CONNECTORS CAN BE USED.  
 TERMINAL: POLARIZED LATCHING CONNECTOR, INSULATION DISPLACEMENT CONTACTS  
 AMP NO. 5-103956-1  
 ALTERNATE TERMINAL:  
 MOLEX NO. 14-60-0022
- RESISTANCE: 12 VOLTS 44 OHMS ± 10% AT [20°C] 68°F.  
 24 VOLTS 175 OHMS ± 10% AT [20°C] 68°F.



SPECIFICATIONS SUBJECT TO CHANGE

CONSISTENT WITH ASME Y14.5M-1994  
 THIS PRINT IS THE CONFIDENTIAL PROPERTY OF REELL PRECISION MFG.  
 THIRD ANGLE PROJECTION

LEVEL	DESCRIPTION	DRAWN	DATE	APPROVED
DRAWN: DDF	DATE: 2-16-96	PART NO: 47-XXX		
CHECKED: DDF	DATE: 7-24-96	TITLE: HIGH TORQUE CLUTCH ASSEMBLY		
APPROVED: GDL	DATE: 7-24-96	DESCRIPTION: EC30XP		
REVISED: 3-10-11	DIMS: [mm]IN	REV: G		
REELL PRECISION MANUFACTURING 1259 WILLOW LAKE BOULEVARD SAINT PAUL, MINNESOTA 55110-5103, USA		SCALE: 2:1	DO NOT SCALE DRAWING	SHEET 1 OF 1

