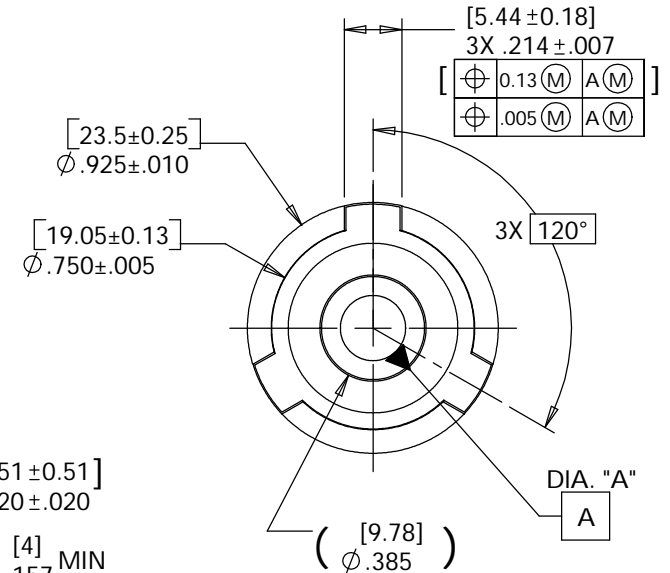
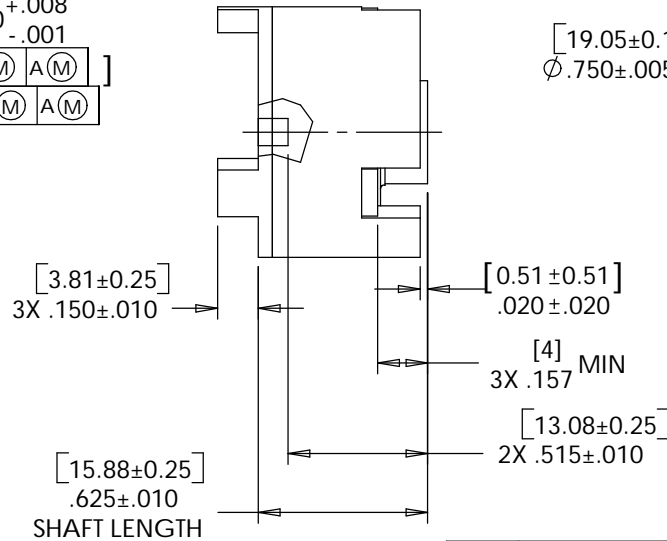
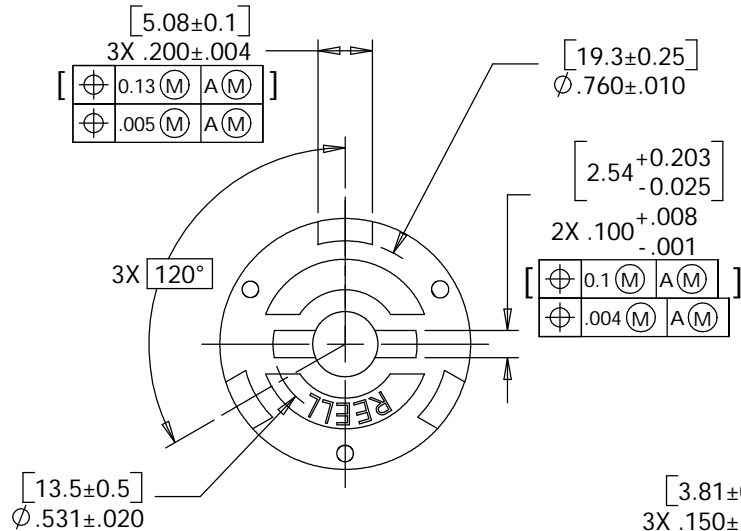
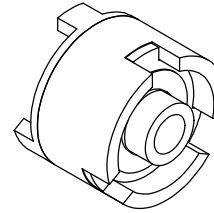


REELL WRAP SPRING SLIP CLUTCH

SHAFT NOM.	DIA. "A"	DESCRIPTION: SB-Nm-DIR-BORE 6mm BORE SHOWN
1/4	.2505/.2580	THREE DOG SHAFT
5/16	.3130/.3230	THREE DOG DRIVE HUB
6mm	[6.01/6.2]	CURRENT TORQUES AVAILABLE
8mm	[8.01/8.2]	SLIP TORQUE: [0.1 N-m] 0.88 Lb-in ±20%
		SLIP TORQUE: [0.2 N-m] 1.77 Lb-in ±20%
		SLIP TORQUE: [0.4 N-m] 3.54 Lb-in ±20%
		SLIP TORQUE: [0.7 N-m] 6.2 Lb-in ±20%



SPECIFICATIONS SUBJECT TO CHANGE

LEVEL	DESCRIPTION	DRAWN	DATE	APPROVED
DRAWN: DDF	DATE: 2-7-96	PART NO: 44-XXX		
CHECKED: DDF	DATE: 3-27-97	TITLE: HIGH INERTIA SLIP DEVICE		
APPROVED: DDF	DATE: 3-27-97	DESCRIPTION: SB		
REVISED: 11-6-01	DIMS: [mm]IN	REV: F		
SCALE: 1.5:1		DO NOT SCALE DRAWING		SHEET 1 OF 1

CONSISTENT WITH ASME Y14.5M-1994  
THIS PRINT IS THE CONFIDENTIAL PROPERTY OF REELL PRECISION MFG.  
THIRD ANGLE PROJECTION



REELL PRECISION MANUFACTURING  
1259 WILLOW LAKE BOULEVARD  
SAINT PAUL, MINNESOTA 55110-5103, USA