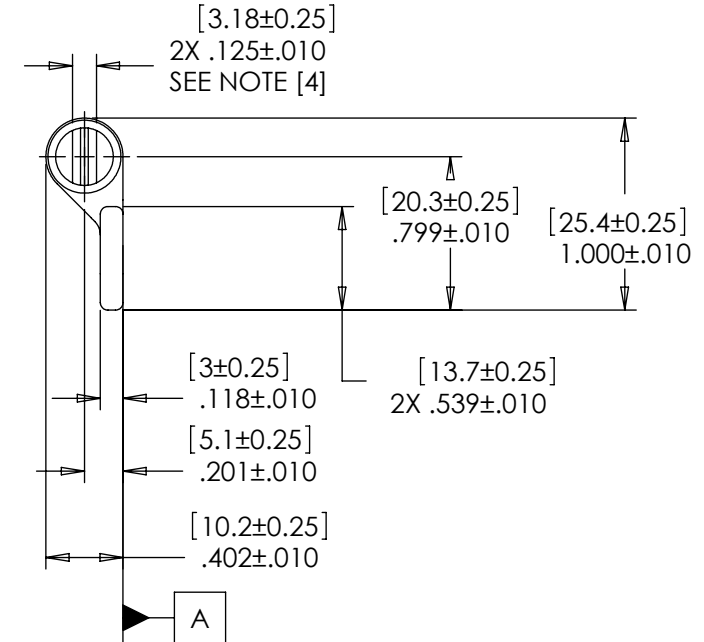
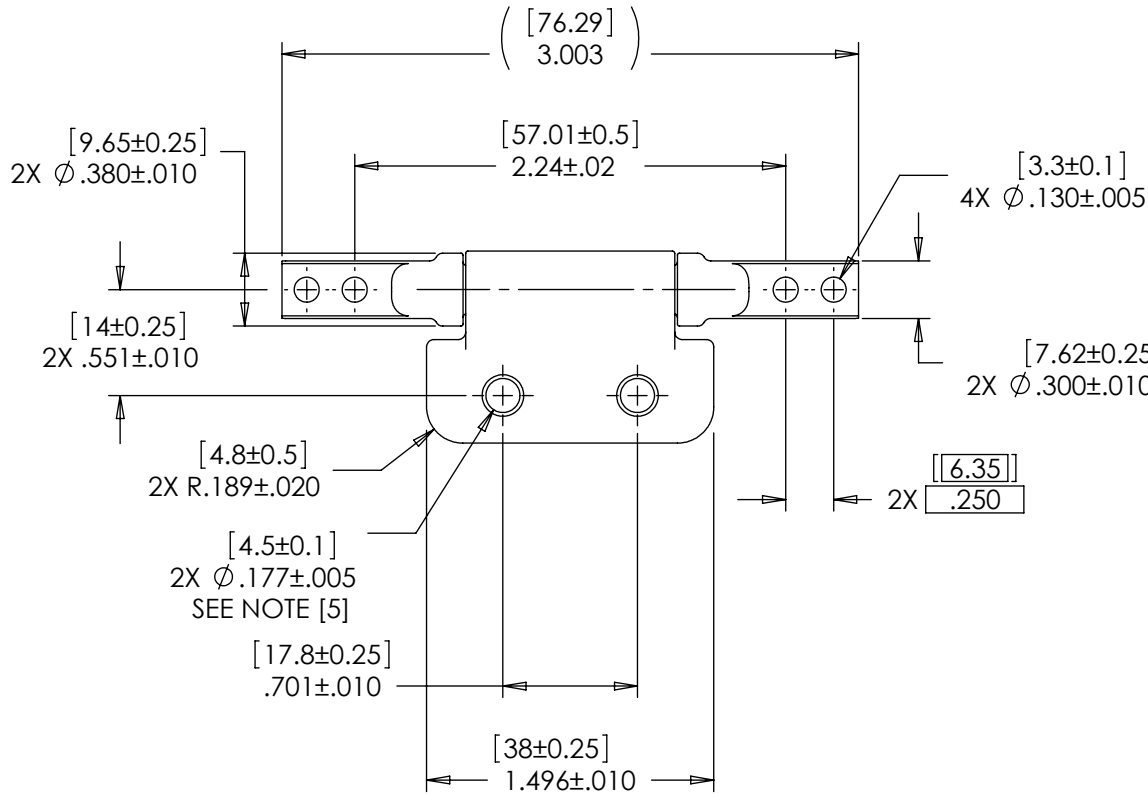


NOTES: 1.

| TORQUE | PLAIN | BLACK |
|----------------------|----------|----------|
| [INCHES] mm | PART NO. | PART NO. |
| [3.9] Lb-in 0.44 Nm | 36-004 | 36-104 |
| [6.9] Lb-in 0.78 Nm | 36-008 | 36-108 |
| [10.8] Lb-in 1.22 Nm | 36-012 | 36-112 |
| [13.9] Lb-in 1.57 Nm | 36-016 | 36-116 |
| [17.8] Lb-in 2.01 Nm | 36-020 | 36-120 |
| [20.8] Lb-in 2.35 Nm | 36-024 | 36-124 |
| [24.7] Lb-in 2.79 Nm | 36-030 | 36-130 |

2. TORQUE TOLERANCE: $\pm 20\%$
3. LIFE: 20,000 CYCLES WHEN DUTY CYCLE IS LESS THAN 10% AND ROTATIONAL SPEED IS LESS THAN 100 RPM. 30 SECONDS MAXIMUM CONTINUOUS ACTUATION.
- [4] FLATS TO BE ORIENTED $\pm 5^\circ$ WITH RESPECT TO DATUM A AS SHOWN.
- [5] DESIGNED TO ACCEPT M4 OR #8 SCREW OR EQUIVALENT
6. USER MUST DETERMINE FITNESS FOR USE IN APPLICATION
7. MATERIAL:
 BRACKET AND SHAFT END ARE ZINC
 SHAFT AND TORQUE ELEMENT ARE HARDENED STEEL



SPECIFICATIONS SUBJECT TO CHANGE

INTERPRET PRINT PER ASME Y14.5M-1994
 THIS PRINT IS THE CONFIDENTIAL PROPERTY OF REELL PRECISION MFG.
 THIRD ANGLE PROJECTION

| LEVEL | DESCRIPTION | DRAWN | DATE | APPROVED |
|--|---------------|--------------------------------|----------------------|--------------|
| DRAWN: LIM | DATE: 7-3-01 | REFERENCE: 36-XXX | | |
| CHECKED: TWJ | DATE: 8-30-01 | TITLE: POSITIONING HINGE, DUAL | | |
| APPROVED: TWJ | DATE: 8-30-01 | PART NO: PHB SERIES | | |
| REVISED: 6-22-11 | DIMS: [mm]IN | REV: G | | |
| REELL PRECISION MANUFACTURING 1259 WILLOW LAKE BOULEVARD SAINT PAUL, MINNESOTA 55110-5103, USA | | SCALE: 1:1 | DO NOT SCALE DRAWING | SHEET 1 OF 1 |