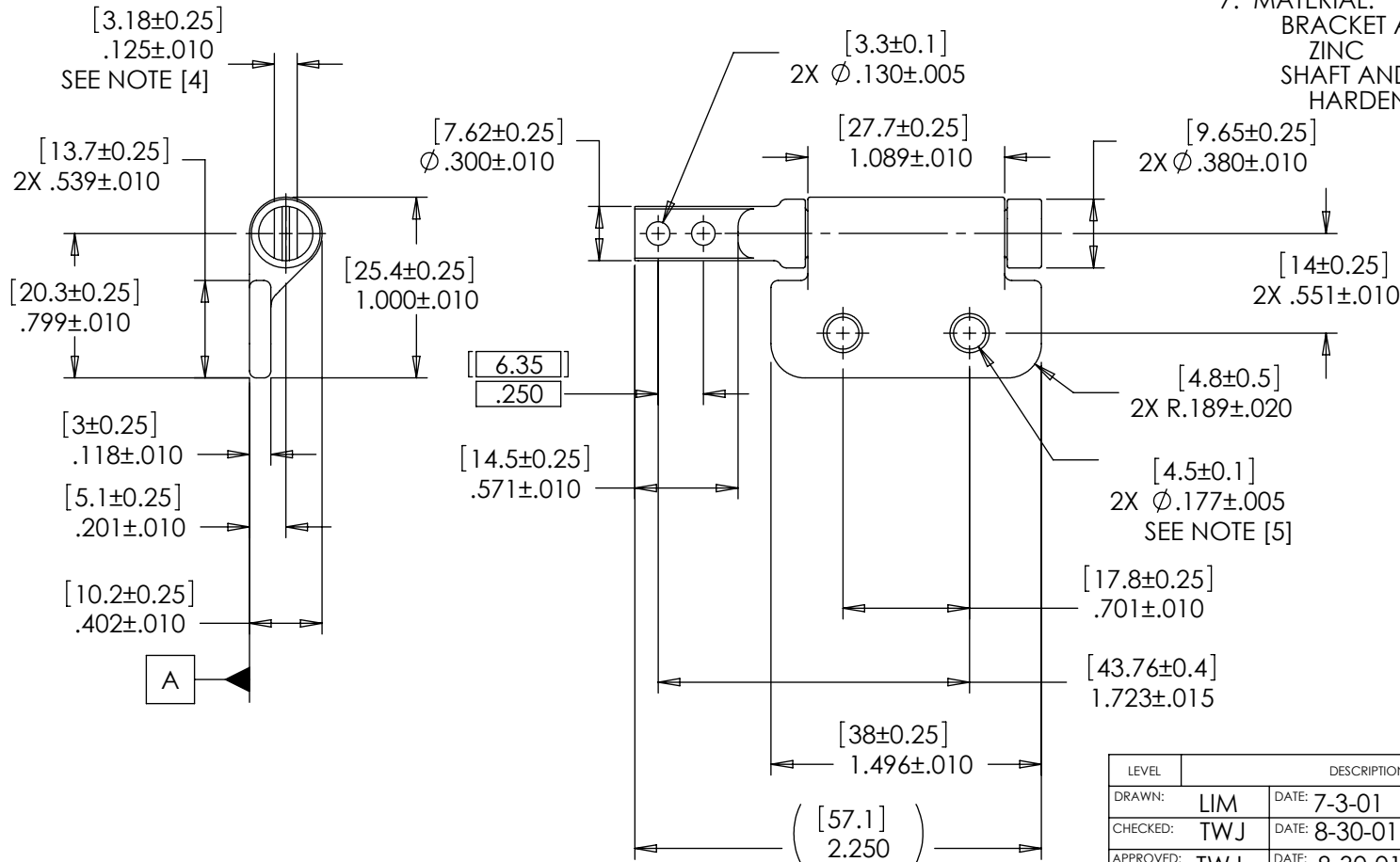


NOTES: 1.

TORQUE	PLAIN	BLACK
[INCHES] mm	PART NO.	PART NO.
[3.9] Lb-in 0.44 Nm	33-004	33-104
[6.9] Lb-in 0.78 Nm	33-008	33-108
[10.8] Lb-in 1.22 Nm	33-012	33-112
[13.9] Lb-in 1.57 Nm	33-016	33-116
[17.8] Lb-in 2.01 Nm	33-020	33-120
[20.8] Lb-in 2.35 Nm	33-024	33-124
[24.7] Lb-in 2.79 Nm	33-030	33-130

2. TORQUE TOLERANCE: $\pm 20\%$
3. LIFE: 20,000 CYCLES WHEN DUTY CYCLE IS LESS THAN 10% AND ROTATIONAL SPEED IS LESS THAN 100 RPM. 30 SECONDS MAXIMUM CONTINUOUS ACTUATION.
- [4] FLAT TO BE ORIENTED $\pm 5^\circ$ WITH RESPECT TO DATUM A AS SHOWN.
- [5] DESIGNED TO ACCEPT M4 OR #8 SCREW OR EQUIVALENT.
6. USER MUST DETERMINE FITNESS FOR USE IN APPLICATION.
7. MATERIAL:
BRACKET AND SHAFT END ARE ZINC
SHAFT AND TORQUE ELEMENT ARE HARDENED STEEL



SPECIFICATIONS SUBJECT TO CHANGE

INTERPRET PRINT PER ASME Y14.5M-1994
THIS PRINT IS THE CONFIDENTIAL PROPERTY OF REELL PRECISION MFG.
THIRD ANGLE PROJECTION

LEVEL	DESCRIPTION	DRAWN	DATE	APPROVED
DRAWN: LIM	DATE: 7-3-01	PART NO: 33-XXX		
CHECKED: TWJ	DATE: 8-30-01	TITLE: POSITIONING HINGE, LEFT		
APPROVED: TWJ	DATE: 8-30-01	DESCRIPTION: PHB SERIES		
REVISED: 6-22-11	DIMS: [mm]IN	REV: G		
REELL PRECISION MANUFACTURING 1259 WILLOW LAKE BOULEVARD SAINT PAUL, MINNESOTA 55110-5103, USA		SCALE: 1:1	DO NOT SCALE DRAWING	SHEET 1 OF 1