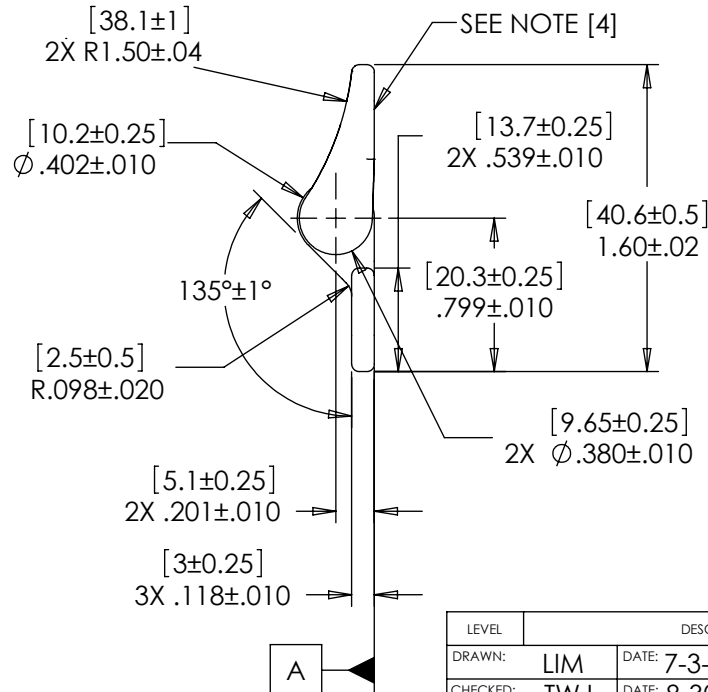
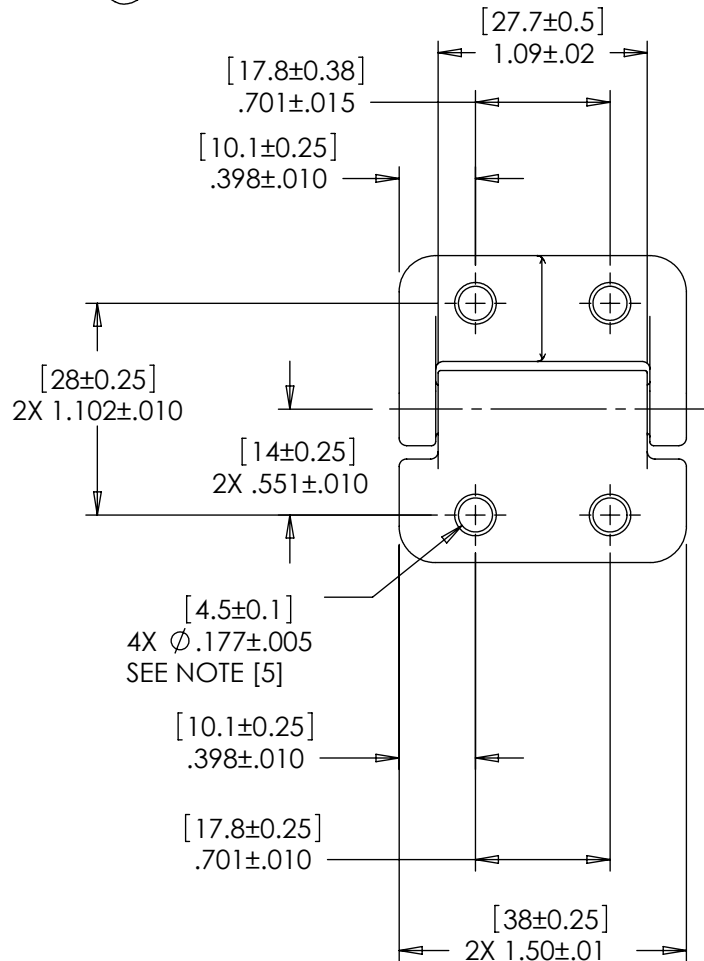


NOTES: 1.

TORQUE	PLAIN	BLACK
[INCHES] mm	PART NO.	PART NO.
[0] Lb-in 0.0 Nm	35-000	35-100
[3.9] Lb-in 0.44 Nm	35-004	35-104
[6.9] Lb-in 0.78 Nm	35-008	35-108
[10.8] Lb-in 1.22 Nm	35-012	35-112
[13.9] Lb-in 1.57 Nm	35-016	35-116
[17.8] Lb-in 2.01 Nm	35-020	35-120
[20.8] Lb-in 2.35 Nm	35-024	35-124
[24.7] Lb-in 2.79 Nm	35-030	35-130

2. TORQUE TOLERANCE:  $\pm 20\%$
3. LIFE: 20,000 CYCLES WHEN DUTY CYCLE IS LESS THAN 10% AND ROTATIONAL SPEED IS LESS THAN 100 RPM. 30 SECONDS MAXIMUM CONTINUOUS ACTUATION.
- [4] FLATS TO BE ORIENTED  $\pm 5^\circ$  WITH RESPECT TO DATUM A AS SHOWN.
- [5] DESIGNED TO ACCEPT M4 OR #8 SCREW OR EQUIVALENT
6. USER MUST DETERMINE FITNESS FOR USE IN APPLICATION
7. MATERIAL:  
 BRACKET AND SHAFT END ARE ZINC  
 SHAFT AND TORQUE ELEMENT ARE HARDENED STEEL



SPECIFICATIONS SUBJECT TO CHANGE

LEVEL	DESCRIPTION		DRAWN	DATE	APPROVED
DRAWN:	LIM	DATE: 7-3-01	PART NO: 35-XXX		
CHECKED:	TWJ	DATE: 8-30-01	TITLE: POSITIONING HINGE		
APPROVED:	TWJ	DATE: 8-30-01	DESCRIPTION: PHC SERIES		
REVISED:	6-22-11	DIMS: [mm]IN	REV: H		
INTERPRET PRINT PER ASME Y14.5M-1994		REELL PRECISION MANUFACTURING		SCALE: 1:1	
THIS PRINT IS THE CONFIDENTIAL PROPERTY OF REELL PRECISION MFG.		1259 WILLOW LAKE BOULEVARD		DO NOT SCALE DRAWING	
THIRD ANGLE PROJECTION		SAINT PAUL, MINNESOTA 55110-5103, USA		SHEET 1 OF 1	