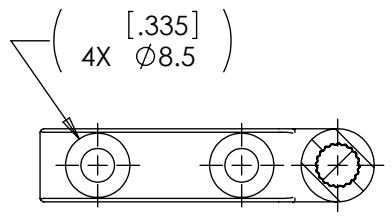


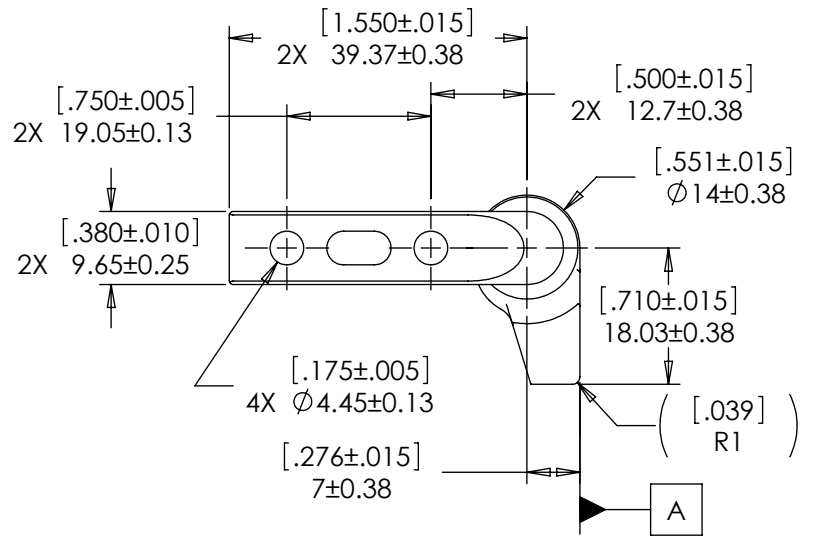
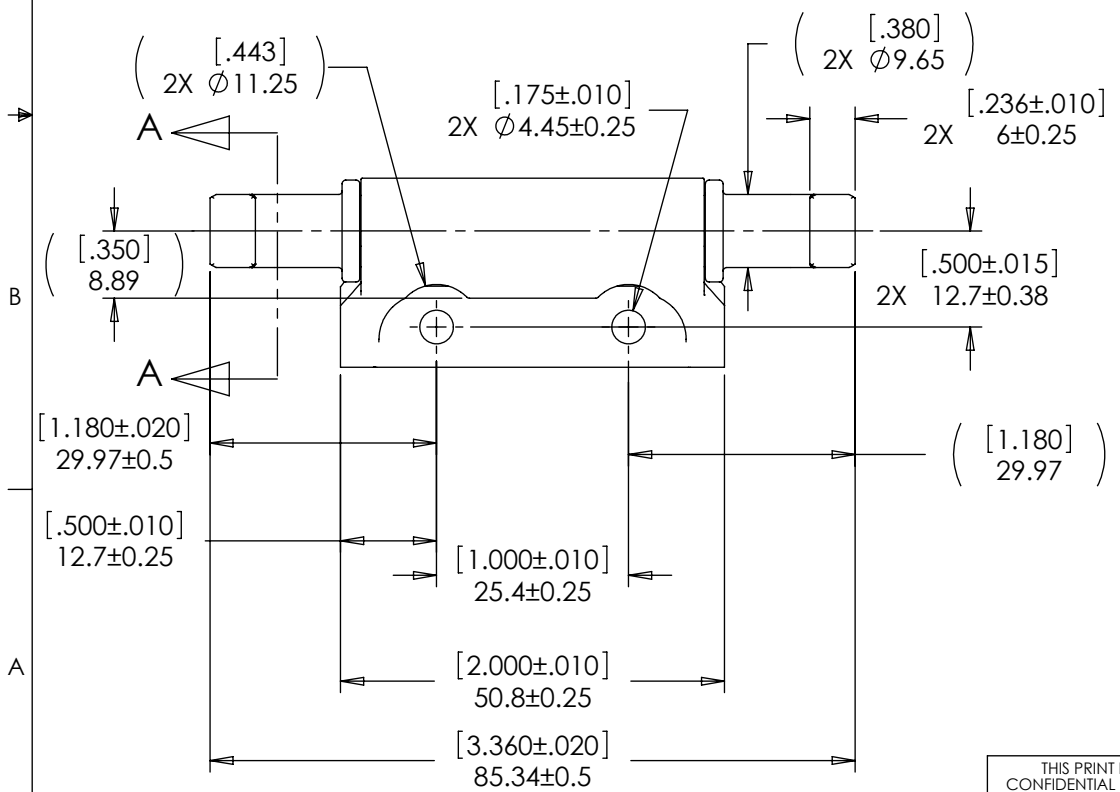
NOTES: 1.

HIGH TORQUE	CCW	CW
	PART NO.	PART NO.
[13.3] Lb-in 1.5 Nm	11-203	11-204
[22.1] Lb-in 2.5 Nm	11-205	11-206
[31] Lb-in 3.5 Nm	11-207	11-208
[39.8] Lb-in 4.5 Nm	11-209	11-210
[48.7] Lb-in 5.5 Nm	11-211	11-212

- TORQUE LOW IS 65% OF HIGH TORQUE
- TORQUE RANGE PER DIRECTION CONFIGURATION:  
 STATIC HIGH TORQUE TOLERANCE  $\pm 20\%$   
 STATIC LOW TORQUE TOLERANCE  $\pm 30\%$
- DYNAMIC TORQUE IS NORMALLY WITHIN 10% OF STATIC TORQUE.
- LIFE: 20,000 CYCLES WHEN DUTY CYCLES IS LESS THAN 10% AND ROTATIONAL SPEED IS LESS THAN 100 RPM. 30 SECONDS MAXIMUM CONTINUOUS ACTUATION.
- SHAFT END TO BE ORIENTED  $90^\circ \pm 5^\circ$  AS SHOWN WITH RESPECT TO DATUM A.
- USER MUST DETERMINE FITNESS FOR USE IN APPLICATION.
- DESIGNED TO ACCEPT M4 OR #8 SCREW OR EQUIVALENT.



SECTION A-A



SPECIFICATION SUBJECT TO CHANGE

THIS PRINT IS THE CONFIDENTIAL PROPERTY OF REELL PRECISION MFG.  
 THIRD ANGLE PROJECTION

LEVEL	DESCRIPTION	DRAWN	DATE	APPROVED
DRAWN:	DDF	DATE:	4-14-05	REFERENCE: APPL: 11-2XX
CHECKED:	TWJ	DATE:	4-26-05	DESIGNER: TIM JENUM
APPROVED:	TWJ	DATE:	4-26-05	TYPE: SALES DRAWING
REVISED:	6-1-11	DIMS:	[IN]mm	TITLE: POSITIONING HINGE 90° DUAL
 REELL PRECISION MANUFACTURING 1259 WILLOW LAKE BOULEVARD SAINT PAUL, MINNESOTA 55110-5103, USA				PART NO: PHK SERIES
				REV: H
SCALE: 1:1		DO NOT SCALE DRAWING		SHEET 1 OF 1